

D Bar X Lighting & Horns-A-Plenty Antler Art

Wagon Wheel Chandeliers, Antler Chandeliers, Wall Sconces, Pendant Lights, Lamps, Tables & More

To Order Call: 800-467-6599 or 775-234-7107

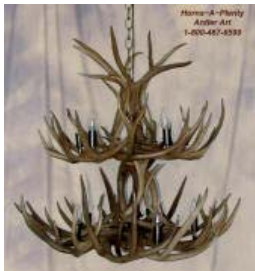
Fax [order form](#): 800-814-4710 or 775-234-7126

| [Home](#) | [Search](#) | [Ordering](#) | [Catalog](#) |

Handcrafted Natural Antler Chandeliers - Double-Tier, Triple-Tier & Cascade

[Print this Page](#)

Please note that all of the chandeliers on this page are made with natural antlers. For cast (artificial) antler designs [click here](#)...



[Enlarge](#) DT320-NS [Details](#)



[Enlarge](#) EK326-NS [Details](#)



[Enlarge](#) 3T385-R [Details](#)



[Enlarge](#) DT321-NS [Details](#)



[Enlarge](#) CC391-R [Details](#)



[Enlarge](#) EK393-NS [Details](#)



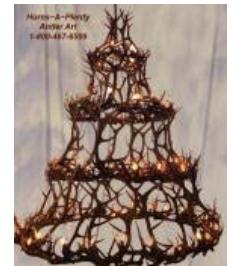
[Enlarge](#) EK389-NS [Details](#)



[Enlarge](#) EK394-NS [Details](#)



[Enlarge](#) EW392-R [Details](#)



[Enlarge](#) 4T300-NS [Details](#)

These beautiful 2-tier and 3-tier natural deer and elk antler chandeliers feature 2-3 tiered rings of antlers with a flaring top crown. Lights flow through the cascade designs. We also make custom designs! All chandeliers are UL-Approved. Standard models feature [Grade 2](#) antlers with light to medium brown stain, [adjustable candelabra-style light sockets](#) with steel light socket covers or [antler light socket covers](#), chain, canopy and hardware. [Click here](#) to see standard chain/light socket/canopy colors: antique brass, black or rust. Please specify chain length when ordering. Custom chain finishes available upon request. Please specify chain length when ordering. Downlights available (\$50 each). Prices shown do not include shades. Rawhide, Mica or Western-Style Parchment [shades](#) available. Shipping price is for 1 item anywhere in the continental US. Combined item shipping available.

Model No	Description	Max. Watt/Bulb.....	Approx. Size.....	Approx. Wt..	ShipSingle	Grade 1 Price	Grade 2 Price	Grade 3 Price
WT375	2-Tier Chandelier - 30 Antlers - Downlight +\$50 Shades sold sep. - Parchment +\$225, Rawhide/Mica +\$405	9x60=540 Cndlb	30"dx28"t	25 lbs.	\$60	\$2,385	\$1,590	\$1,272
DT320	2-Tier Chandelier - 32 Antlers - Downlight +\$50 Shades sold sep. - Parchment +\$250, Rawhide/Mica +\$450	10x60=600 Cndlb	36"dx32"t	35 lbs.	\$60	\$3,120	\$2,080	\$1,664
DT321	2-Tier Chandelier - 50 Antlers - Downlight +\$50 Shades sold sep. - Parchment +\$300, Rawhide/Mica +\$540	12x60=720 Cndlb	48"dx42"t	75 lbs.	\$85	\$6,818	\$4,545	\$3,636
DT322	2-Tier Chandelier - 60 Antlers - Downlight +\$50 Shades sold sep. - Parchment +\$300, Rawhide/Mica +\$540	12x60=720 Cndlb	60"dx48"t	110 lbs.	\$400	\$8,805	\$5,870	\$4,696
DT323	2-Tier Chandelier - 70+ Antlers - Downlight +\$50 Shades sold sep. - Parchment +\$350, Rawhide/Mica +\$630	14x60=840 Cndlb	72"dx60"t	145 lbs.	\$500	\$13,245	\$8,830	\$7,064
DT324	2-Tier Chandelier - 80+ Antlers - Downlight +\$50 Shades sold sep. - Parchment +\$350, Rawhide/Mica +\$630	14x60=840 Cndlb	84"dx 68"t	170 lbs.	\$600	\$17,153	\$11,435	\$9,148
EK326	2-Tier Chandelier - 28 Antlers - Downlight +\$50 Shades sold sep. - Parchment +\$350, Rawhide/Mica +\$630	14x60=840 Cndlb	72"dx 60"t	160 lbs.	\$400	\$7,800	\$5,200	\$4,160
3T380	3-Tier Chandelier - 60+ Antlers - Downlight +\$50 Shades sold sep. - Parchment +\$350, Rawhide/Mica +\$630	14x60=840 Cndlb	36"dx 48"t	55 lbs.	\$530	\$5,610	\$3,740	\$2,992
3T381	3-Tier Chandelier - 70+ Antlers - Downlight +\$50 Shades sold sep. - Parchment +\$350, Rawhide/Mica +\$630	14x60=840 Cndlb	40"dx 60"t	85 lbs.	\$690	\$6,413	\$4,275	\$3,420
3T382	3-Tier Chandelier - 80+ Antlers - Downlight +\$50 Shades sold sep. - Parchment +\$400, Rawhide/Mica +\$720	16x60=960 Cndlb	48"dx 48"t	100 lbs.	\$990	\$8,400	\$5,600	\$4,480
3T383	3-Tier Chandelier - 90+ Antlers - Downlight +\$50 Shades sold sep. - Parchment +\$400, Rawhide/Mica +\$720	16x60=960 Cndlb	60"dx 60"t	125 lbs.	\$1,290	\$13,215	\$8,810	\$7,048
3T384	3-Tier Chandelier - 100+ Antlers - Downlight +\$50 Shades sold sep. - Parchment +\$450, Rawhide/Mica +\$810	18x60=1080 Cndlb	72"dx 72"t	165 lbs.	\$1,520	\$18,825	\$12,550	\$10,040
3T385	3-Tier Chandelier - 150+ Antlers - Downlight +\$50 Shades sold sep. - Parchment +\$500, Rawhide/Mica +\$900	20x60=1200 Cndlb	84"dx 84"t	210 lbs.	\$2,150	\$25,598	\$17,065	\$13,652
CC391	Cascade Chandelier - 18 Antlers - Downlight +\$50 Shades sold sep. - Parchment +\$225, Rawhide/Mica +\$405	9x60=540 Cndlb	36"dx36"t	35 lbs.	\$60	\$3,120	\$2,080	\$1,664
EK394	"Diamond" Chandelier - 14 Antlers - Downlight N/A Shades sold sep. - Parchment +\$350, Rawhide/Mica +\$630	14x60=840 Cndlb	48"dx 60"t	85 lbs.	\$250	\$6,300	\$4,200	\$3,360
EK393	Cascade Chandelier - 12 Antlers - Downlight N/A Shades sold sep. - Parchment +\$300, Rawhide/Mica +\$540	12x60=720 Cndlb	60"dx 60"t	110 lbs.	\$200	\$2,880	\$2,400	\$1,920