

D Bar X Lighting & Horns-A-Plenty Antler Art

Wagon Wheel Chandeliers, Antler Chandeliers, Wall Sconces, Pendant Lights, Lamps, Tables & More

To Order Call: 800-467-6599 or 775-234-7107

Fax [order form](#): 800-814-4710 or 775-234-7126

| [Home](#) | [Search](#) | [Ordering](#) | [Catalog](#) |

Handcrafted Natural Antler Wall Sconces [Print this Page](#)

Please note that all of the wall sconces on this page are made with natural antlers. For cast (artificial) antler designs [click here...](#)



[Enlarge](#) WE211 [Details](#)



[Enlarge](#) WE260 [Details](#)



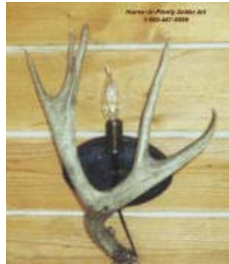
[Enlarge](#) WE265 [Details](#)



[Enlarge](#) WE251-M [Details](#)



[Enlarge](#) WE250-W [Details](#)



[Enlarge](#) WE235 [Details](#)



[Enlarge](#) WE225 [Details](#)



[Enlarge](#) WC270 [Details](#)



[Enlarge](#) WE251-W [Details](#)

Antler wall sconces are a great way to add extra lighting and a beautiful natural touch to a room without using valuable floor space. We also make custom designs! All direct-wired sconces are UL-Approved. Standard [light socket covers](#) and mounting plates are gunmetal black, but may also be glossy black, flat black, painted rust, flat dark brown, oil-rubbed bronze (paint), or old-fashioned rust ([click here](#) for finish photos). Antler light socket covers are not available for wall sconces. Standard wiring on wall sconces is for direct wiring into junction box on your wall, but we can also wire them with a cord and plug for plugging into electrical outlet. Mica, rawhide or western-style [shades](#) are available for this style (please order with sconce). Standard models are [Grade 2](#) antlers with light to medium brown stain. **The size and shape of each piece will vary depending on the antlers used.** Shipping price is for 1 item anywhere in the continental US. Combined item shipping available.

Model No.	Description	Max. Watt/Bulb.....	Approx. Size.....	Approx. Wt..	ShipSingle	Grade 1 Price	Grade 2 Price	Grade 3 Price
WE211	Turn-Around Style Mule Deer Antler Wall Sconce Shades sold sep. - Parchment +\$75, Rawhide/Mica +\$135	3x60=180 Cndlb	26"w x 30"t x 11"p	10 lbs.	\$60	\$1,005	\$670	\$536
WE260	Fallow Deer Vertical Wall Sconce Shade sold sep. - Parchment N/A, Rawhide/Mica +\$75	1x75=75 Std	11"w x 19"t x 11"p	4 lbs.	\$35	\$585	\$390	N/A
WE265	Fallow Deer Vertical Wall Sconce Shades sold sep. - Parchment N/A, Rawhide/Mica +\$225	3x100=300 Std	24"w x 36"t x 13"p	20 lbs.	\$60	\$1,800	\$1,200	N/A
WE250	Kara-Style 1-Light Wall Sconce Shades sold sep. - Parchment +\$25, Rawhide/Mica +\$45	1x60=60 Cndlb	16"w x 12"t x 9"p	6 lbs.	\$35	\$210	\$140	\$112
WE251	Kara-Style 2-Light Wall Sconce Shades sold sep. - Parchment +\$50, Rawhide/Mica +\$90	2x60=120 Cndlb	20"w x 12"t x 9"p	9 lbs.	\$35	\$270	\$180	\$144
WE235	One-Light, One-Antler Wall Sconce - Shades not available	1x60=60 Cndlb	12"w x 12"t x 9"p	4 lbs.	\$25	\$165	\$110	\$88
WE225	One-Light Two-Antler Vertical Sconce Shades sold sep. - Parchment +\$25, Rawhide/Mica +\$45	1x60=60 Cndlb	18"w x 22"t x 9"p	10 lbs.	\$35	\$278	\$185	\$148
WC270	Elk Antler Lantern Candle Wall Sconce with 6 Mini-Lantern Tea-light Candle Holders	None	22" wide x 44" tall x 12" deep	18 lbs.	\$35	\$360	\$240	\$192